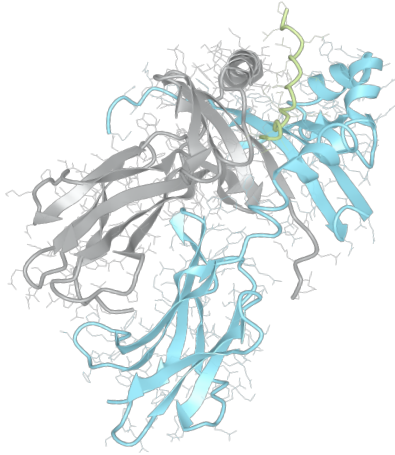


Product datasheet



sHLA– DQB1*06:02 DQA1*01:01

DQB1*0602, DQB10602, DQB1*06, DQB06, DQ6
DQA1*0101, DQA10101, DQA1*01, DQA01

Serological Name	DQ6
Peptide Load	Endogenous
Modification	Unmodified
Conjugation	Unconjugated
SKU	DQB10602/DQA10101

Product Description

Allele Name	DQA1*01:01 DQB1*06:02
HLA Class	HLA Class II
HLA Gene Locus	HLA-DQ
Alternative Allele Name A Chain	DQA1*0101, DQA10101, DQA1*01, DQA01
Alternative Allele Name B Chain	DQB1*0602, DQB10602, DQB1*06, DQB06, DQ6
Description	Recombinant, truncated Class II soluble Human Leukocyte Antigen (sHLA), naturally folded and glycosylated, loaded with endogenous peptides.
Serological Name	DQ6
Serological Split	DQ1
Allele Frequency [World Population]	
A chain	11.1%
B chain	7.8%

Associated products

[DQB10602/DQA10101bio](#)
[DQB10602/DQA10101pe](#)

Product Specification

Product name	HLA-DQB1*06:02/DQA1*01:01
HLA Species	Human
Host Cell Line Species	Mouse
Clone Designation	C3F10
Tail Specification	ZP
Peptide Load	Endogenous
Modification	Unmodified
Conjugation	Unconjugated
Complexity	Monomer
Protein Format	Recombinant, truncated, zipper-stabilized, soluble, non-modified, non-labeled, endogenously loaded
Storage Temperature	4°C (This product should be stored undiluted)
Form	Liquid
Concentration	1000.0 µg/ml
Formulation	PBS/0.02% Sodium Azide
pH	7.4
Purification Method	Affinity Chromatography
Grade	Research Use Only [RUO]
Authentication Verification	Sequence Based Typing

Protein Sequences

Alpha Chain Sequence	EDIVADHVAS CGVNLYQFYG PSGQYTHEFD GDEEFYVDLE RKETAWRWPE FSKFGGFDPQ GALRNMAVAK HNLNIMIKRY NSTAATNEVP EVTVFSKSPV TLGQPNTLIC LVDNIFPPVV NITWLSNGQS VTEGVSETSF LSKSDHSFFK ISYLTFLPSA DEIYDCKVEH WGLDQPLLKH WEPEIPAPMS EVDGGGGGAQ LEKELQALEK ENAQLEWELQ ALEKELAQ
Beta Chain Sequence	RDSPEDFVFQ FKGMCYFTNG TERVRLVTRY IYNREEYARF DSDVGVYRAV TPQGRPDAEY WNSQKEVLEG TRAEALDTCR HNYEVAFRGI LQRRVEPTVT ISPSRTEALN HHNLLVCSVT DFYYPGQIKVR WFRNDQEETA GVVSTPLIRN GDWTFQILVM LEMTPQRGDV YTCHVEHPSL QSPTTVEWRA QSESAQSKVD GGGGAQLKK KLQALKKKNA QLKWKLQALK KKLAQ

Related Products

[DQB10603/DQA10101](#)
[DQB10601/DQA10101](#)
[DQB10301/DQA10201](#)
[DQB10602/DQA10102](#)

Applications

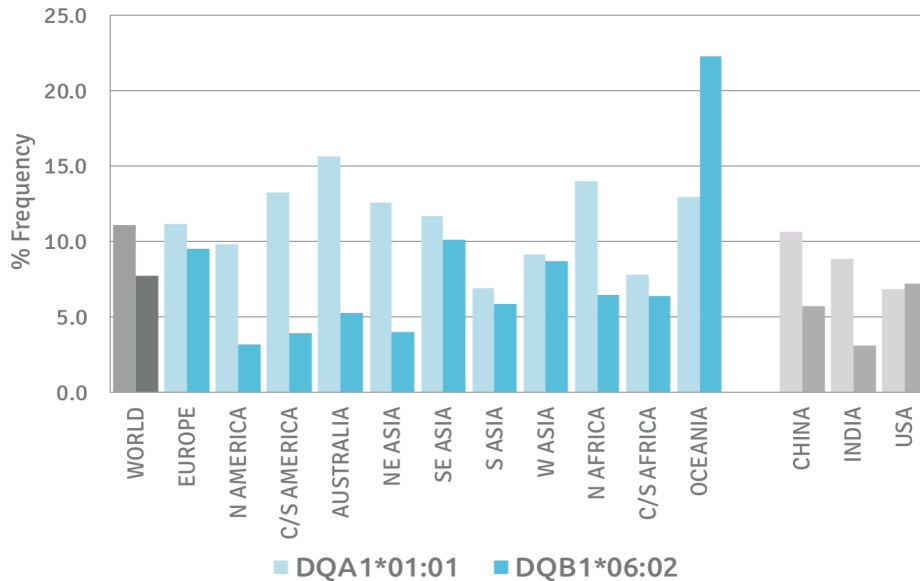
HLA Sandwich ELISAs
 HLA Direct ELISAs
 HLA-Sera Antibody Assays
 HLA Controls in ELISA Assays
 HLA Assay Standards
 HLA Blocking Assays
 HLA Neutralizing Assays
 HLA Competition Assays
 HLA Bead Assays
 HLA Immunization Procedures

Recommended Antibodies

-

Allele Frequency

Worldwide Allele Frequency



Please note:

ALL PRODUCTS ARE FOR RESEARCH USE ONLY. NOT FOR COMMERCIAL USE IN DIAGNOSTIC PROCEDURES.
 For more information, please visit our Policies section on our website. For licensing inquiries, please contact

licensing@hlaprotein.com

 HLA Protein
PURE PROTEIN LLC

